

PIE-Rivers Partnership

2024 Annual Meeting

Thursday, December 5th, 2024 | Parker River National Wildlife Refuge



Parker, Ipswich & Essex River Watershed Collaborative

AGENDA

- 9:00 am** Welcome & PIE-Rivers Update
- 9:15 am** **Session 1:** Grassroots Outreach at Chebacco Lake & Watershed Association
- 10:00 am** Break & Networking
- 10:30 am** **Session 2:** Community Engagement & The Great Marsh with Mass Audubon
- 11:30 am** **Session 3:** Ipswich Mills Dam: Lessons Learned
- 11:45 am** Brainstorming Session: What is Meaningful Community Engagement?
- 12:30 pm** Optional Lunch



PIE-Rivers Partnership

To protect, restore and increase the resiliency of the valuable aquatic resources of the Parker, Ipswich and Essex River Watersheds.



Steering Committee

Carol McCauley (*Mass Audubon*)

George Comiskey (*Parker River Clean Water Association*)
(*Town of Georgetown Planning Board*)

Heidi Gaffney (*Town of Topsfield*)

Jennifer Hughes (*Town of Ipswich*)

Kathryn Glenn (*MA Office of Coastal Zone Management*)

Kristen Grubbs (*Town of Newbury*)

Matt Hillman (*Parker River National Wildlife Refuge*)

Fred Jennings (*Trout Unlimited Nor'east*)

Hanna Mogensen (*Eight Towns and the Great Marsh/Merrimack Valley Planning Commission*)

Peter Phippen (*Eight Towns and the Great Marsh/Merrimack Valley Planning Commission*)

Ross Povenmire, Chair (*Town of Boxford*)

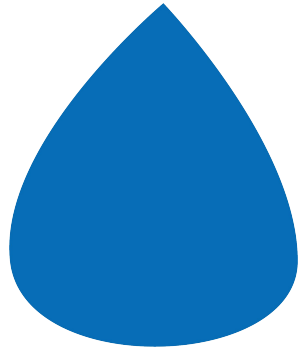
Kaitlyn Shaw, Alexa Cacacie (*National Oceanic and Atmospheric Administration*)

Molly Shea (*Metropolitan Area Planning Council*)

Ann Witzig (*Parker River Clean Water Association*)



PIE-Rivers Priority Areas

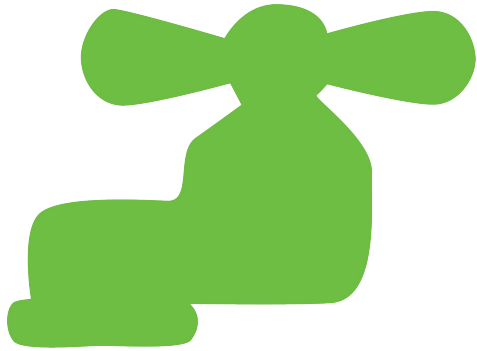


Water Conservation

North Shore Water Resilience Task Force



PIE-Rivers Priority Areas



Water Quality Management

Monitoring & Research

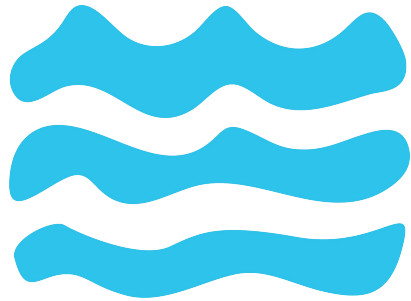
Plastic Spiraling in River Networks¹



Parker, Ipswich & Essex River Watershed Collaborative

¹This study is a collaboration of researchers at the University of New Hampshire, Loyola Chicago, and University of Toronto, via funding from the National Science Foundation and the Ocean Conservancy. For more information, please contact wil.wollheim@unh.edu.

PIE-Rivers Priority Areas



River & Stream Continuity

Barrier Removal Projects

- *Ipswich Mills Dam (Ipswich)*
 - *Larkin Dam (Newbury)*
- *Orchard St Culvert (Newbury)*



PIE-Rivers Priority Areas



Land Use

Regulations

- *Climate Bill*

Restoration

- *Great Marsh*

Conservation

- *Baldpate Hill (Georgetown)*



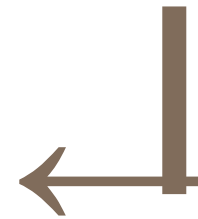
2025 Goal

Capture and visualize
project data



Bring PIE to the
community

Increase visibility of PIE Partners
work both locally and regionally





Get Involved!

- Become a Partner
- Serve on the Steering Committee
- Be a Town Rep
- Network with us
- Sign up for PIE E-news

Molly Courson, *PIE-Rivers Coordinator*
mcourson@pie-rivers.org



SESSION 1

Grassroots Outreach at Chebacco Lake & Watershed Association



SESSION 2

Community Engagement & the Great Marsh with Mass Audubon



SESSION 3

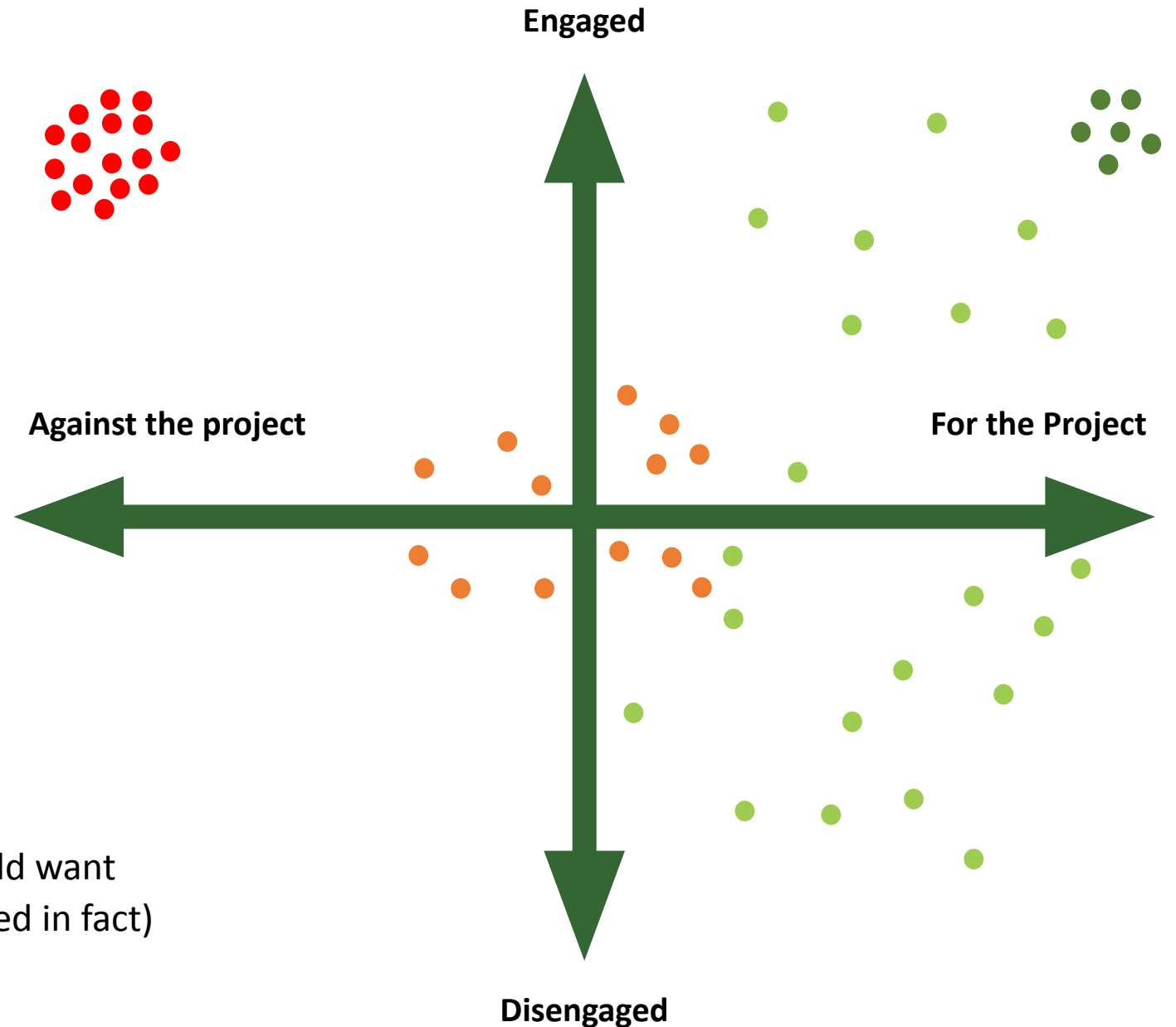
Ipswich Mills Dam: Lessons Learned



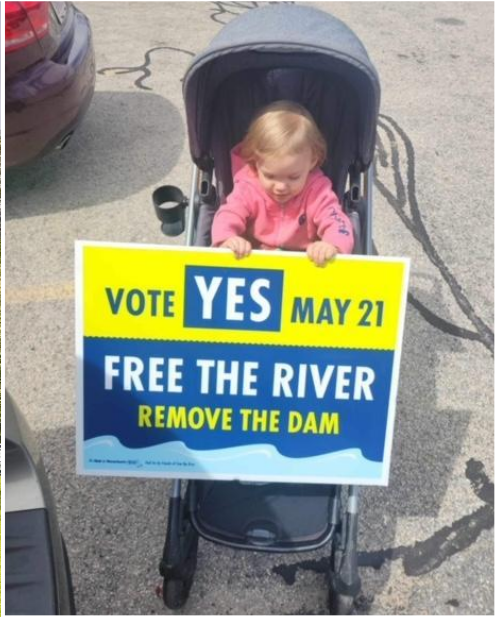
How to Garner Support

The Sliding Scale of "Who Cares?"

1. Identify your audience
2. Figure out the pros to your specific dam removal (not just ecological)
3. Figure out the main reasons people would want to keep the dam (even if they're not based in fact)
4. Start having conversations



Lesson Learned: People Care and Want to Help



Lesson Learned: Utilize Your Allies



FILM PREMIERE

The Ipswich River Watershed Association
is excited to announce *the debut of*

OUR RESPONSIBILITY

FREEING THE IPSWICH RIVER



← RSVP

FILM SCREENING AND PANEL DISCUSSION

Thursday, March 21, 7pm
EBSCO Hall, 5 Peatfield St., Ipswich

SPEAKERS

Kristen Ferry
Habitat Restoration Branch Manager,
MA Division of Ecological Restoration

Andy Fisk
Northeast Regional Director
American Rivers

Marea Gabriel
Freshwater Manager
The Nature Conservancy



Parker, Ipswich & Essex River Watershed Collaborative

Where we showed the film:

- YouTube / Social Media
- Public Access TV
- Premier & Panel w/ Partners
- Family Friendly at True North
- Town Hall w/ Local Historian
- “Friends” Press Conference
- Brown Bag Lunches w/ IRWA corporate partners



Lesson Learned: Get Creative



THE MAGIC OF THE IPSWICH RIVER

An art show sponsored by the Ipswich Art Association

RECEPTION

Friday, April 5th, 2024, 6-8 p.m.

Ipswich Town Hall, 25 Green Street, Ipswich



Make a Valentine for the Ipswich River!



Mindful Resiliency for Change: Practices for Turbulent Times

Thursday, May 9th, 6pm

EBSCO Hall, 5 Peatfield St., Ipswich



IPSWICH RIVER WATERSHED ASSOCIATION

May 21 | 6pm – 9pm

True North Ale Company, 116 County Rd.

ELECTION NIGHT PARTY



Parker, Ipswich & Essex River Watershed Collaborative

Lesson Learned: Facebook Matters (unfortunately)

all aspects and outcomes and we as residents should and will hold it accountable.

5 hrs Like Reply 1



Michael Matheson

Wendy Dabcovich their mission is destroy nature and lives.

5 hrs Like Reply 1



Wendy Dabcovich

Michael Matheson huh? Please explain?

5 hrs Like Reply



THELOCALNEWS.NEWS

Another dam beaver

Inventive beaver climbs out of the water to use top of fish ladder to get past very strong curre...

You, Lauren Fitzgerald and 22 others

4 comments

Love

Comment

Send

Carol Bousquet

March 29 · One of the most common, erroneous arguments against removing the dam. I appreciate important clarification.

Ipswich River Watershed Association

March 29 · In this blog post our Resiliency Program Director Erin Bonney Casey explores the qu dam removal exacerbate the problem with low flows in the river! ... See more.



IPSWICH RIVER WATERSHED ASSOCIATION
Dam Removal and Water Supplies: What's the real story? - Ipswich River Watershed Association

Stoney Stone and 13 others

Like

Comment

Send



THELOCALNEWS.NEWS

Letter: Fish ladders are fine but removing the dam would be better

Neil Shea responds to suggestions that fish ladders should be installed at the Ipswich Mill

Leah Feeney, Carol Bousquet and 44 others

516 c

Like

Comment

Send

Ipswich River Watershed Association
April 23 ·

It's the blog post you've all been waiting for!

You'll see a summary of the sediment testing plan for the Ipswich Mills Dam Removal Project. Discover how we're safeguarding the vital clam flats along the Ipswich River while ensuring environmental responsibility as we continue to help the Town of Ipswich investigate what the impacts of removing the Ipswich Mills Dam would be. Learn about sediment management strategies, including passive release and active removal, and how we... See more



IPSWICH RIVER.ORG

So You're Sediment Curious...? - Ipswich River Watershed Association

Clamming flats along the Ipswich River serve as a vital source of livelihood for numerous famili...

Leah Feeney, Carol Bousquet and 62 others

245 comments

SAVE OUR
CLAM



KEEP THE
DAM!

VOTE NO - MAY 21ST



Lesson Learned: Hold Space for Difficult Conversations



Ipswich Mills Dam Discovery Walk

Join us in exploring the dam site and surrounding neighborhoods.

Saturday, May 11th
10am

Hall Haskell House, 36 South Main Street

SPECIAL GUESTS
Ben Gahagan: Diadromous Fish Biologist,
Massachusetts Division of Marine Fisheries
Chris Hirsch: Dam Removal Program Manager,
Massachusetts Division of Ecological Restoration
Brian Kelder: Marine Habitat Resource Specialist,
National Oceanic and Atmospheric Administration

Still have questions? Come talk to the scientists.



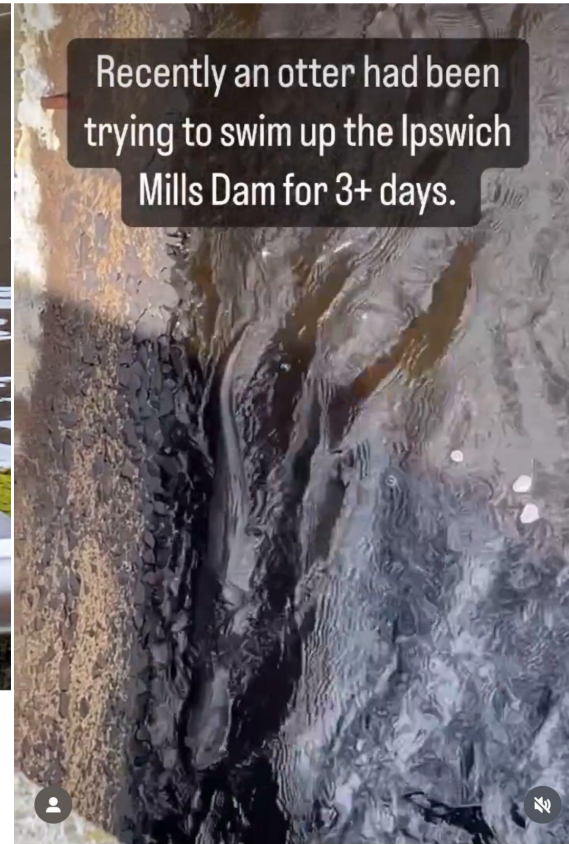
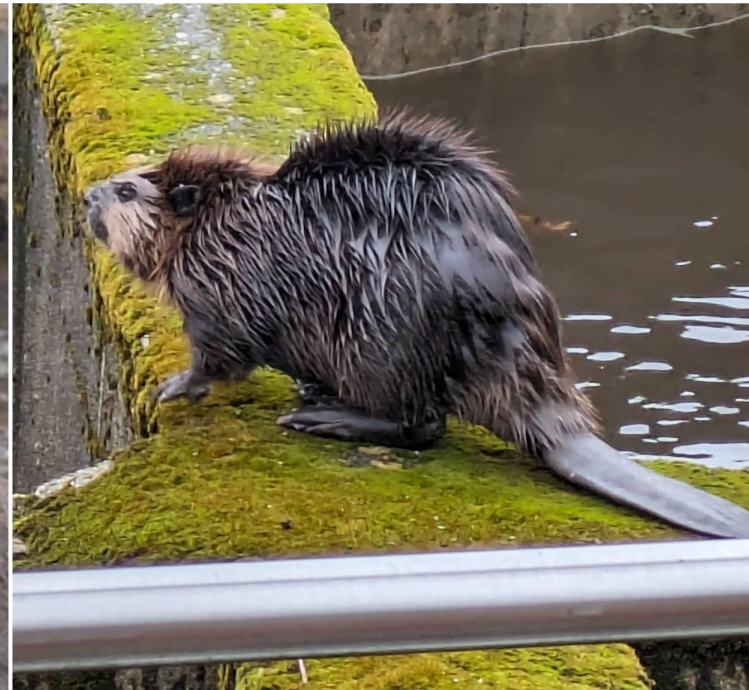
IPSWICH RIVER
WATERSHED ASSOCIATION

RSVP →



Parker, Ipswich & Essex River Watershed Collaborative

Lesson Learned: People Love Animals



The Local News
reader-supported, community-driven journalism

IPSWICH EVENTS AND NORTH SHORE EVENTS CONTENT TOWNS SUPPORT YOUR NEWSPAPER ADVERTISE ABOUT US CONTACT

Home / Animals / Days of otter frustration at dam's tricky waters

DAYS OF OTTER FRUSTRATION AT DAM'S TRICKY WATERS

ANIMALS / IPSWICH

PUBLISHED ON AUGUST 18, 2023 BY JOHN P. MULDOON

Look in a Great Rate NOW!
30-YEAR FIXED RATE RESIDENTIAL MORTGAGE
5.990% to 6.117%

The Local News
reader-supported, community-driven journalism

IPSWICH EVENTS AND NORTH SHORE EVENTS CONTENT TOWNS SUPPORT YOUR NEWSPAPER ADVERTISE ABOUT US

Home / Animals / Dam beaver caught and released

DAM BEAVER CAUGHT AND RELEASED

ANIMALS / IPSWICH

PUBLISHED ON APRIL 29, 2023 BY A CORRESPONDENT

Look in a Great Rate NOW!
30-YEAR FIXED RATE RESIDENTIAL MORTGAGE
5.990% to 6.117%

EEL FIND AN INNOVATIVE WAY AROUND FISH LADDER

ANIMALS / IPSWICH

PUBLISHED ON APRIL 30, 2024 BY JOHN P. MULDOON

Look in a Great Rate NOW!
30-YEAR FIXED RATE RESIDENTIAL MORTGAGE
5.990% to 6.117%

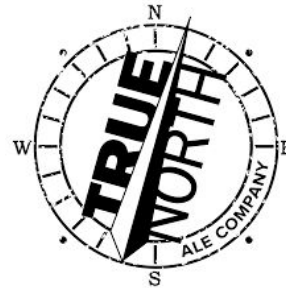
94.7K · View insights

Boost post

5,678 81 1,045



Lesson Learned: Better Together



BRAINSTORMING SESSION

What is Meaningful Community Engagement?

