

# Parker-Ipswich-Essex Rivers Restoration Partnership

*Protecting and restoring coastal watersheds on Massachusetts' North Shore*

Photo: A. Borsari



## Priority Actions

Our partners have identified specific types of effort to focus on in the near-term (2015-2016). Explore these areas and a complete list of recommended actions.



## Measuring Progress

Sustainably healthy watersheds are a long-term goal. We track a range of biological, physical and social measures to see how our efforts are doing and where they can be improved.



## Municipal Services

A range of services to provide cost savings and support municipal efforts to (1) comply with water-related regulatory requirements and (2) scope, fund and implement on the ground projects.

## Projects



**South Middleton Dam Removal**



**Great Marsh Resiliency Project**



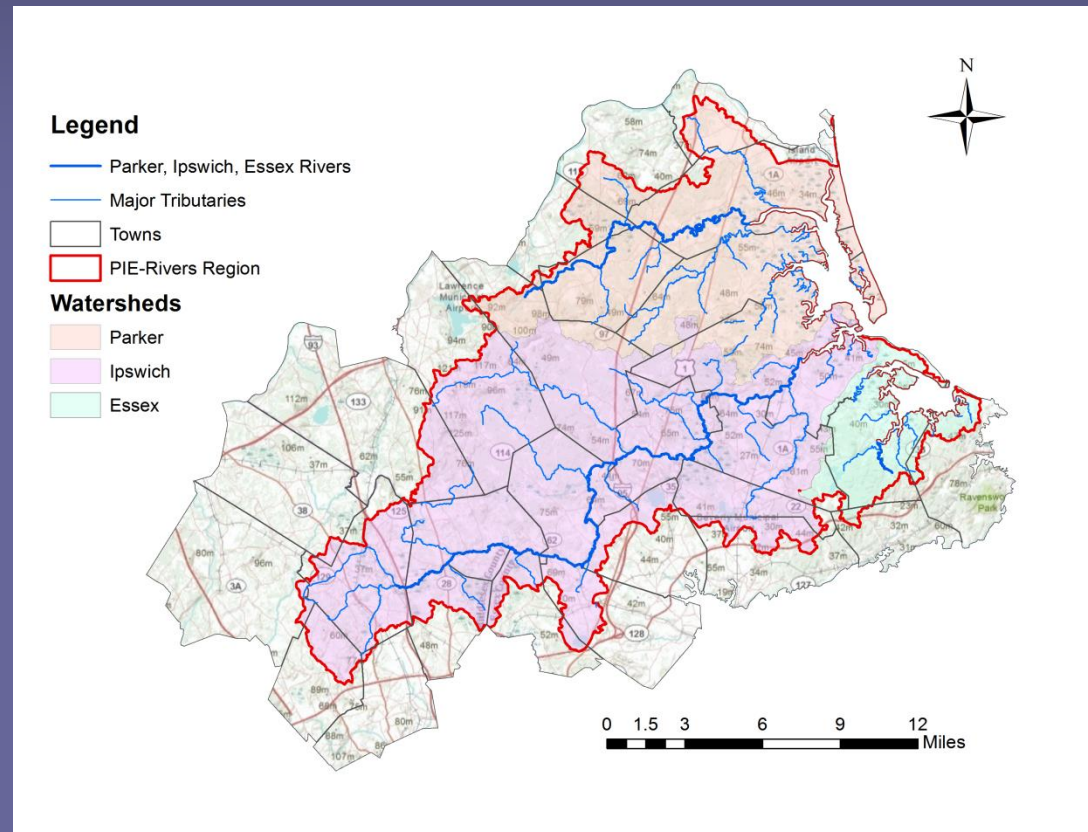
**Addressing Impaired Salt Marsh Hydrology**



**Ipswich River Resiliency and Coastal Bank Stabilization Project**

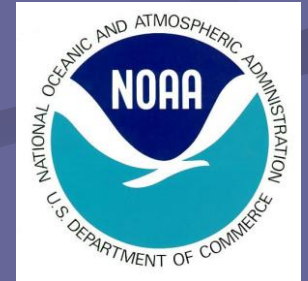
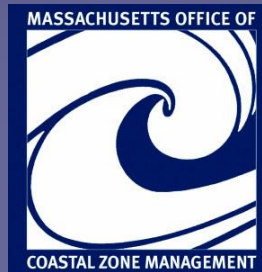
# PIE-Rivers is . . .

- A Partnership to protect and restore the valuable aquatic resources of the Great Marsh region and its tributaries
- A forum for collaboration across boundaries and disciplines





# PIE-Rivers is . . . You!



# Current Structure

- Partner
- Steering Committee
  - George Comiskey, Hunt Durey, Christopher LaPointe, Brian Kelder, Bill Peterson, David Standley, Peter Phippen, Robert Buchsbaum



- Sub-Committees
  - Municipal Engagement
  - Restoration Progress

# 2015-2017 Priorities

Near-term Priorities

Complete List

## Stormwater & MS4 Support



### Related Actions:

- Identify Stormwater Priorities
- Provide MS4 Support
- Upgrade Stormwater Systems

## River & Stream Continuity



### Related Actions:

- Prioritize Aquatic Barriers
- Remove Migration and Flow Barriers

## Water Conservation



### Related Actions:

- Water Conservation Outreach
- Incentivize Water Conservation
- Create Model Municipal Integrated Water Resources Management Program
- Develop Water Conservation Program

## Land Conservation & Protection



### Related Actions:

- Prioritize Conservation Land
- Regional Land Protection and Conservation Plan
- Improve Conservation Land Stewardship



# Completion of Hurricane Sandy Resiliency Grant

## Restoring Resiliency to the Great Marsh of Massachusetts' Upper North Shore 2015 -2017

### Project Outcomes

- 6 miles of coastline and thousands of shoots planted; several dunes created
- 3 acres of eelgrass restored
- 8,000 acres of infested or threatened marsh treated for invasive pepperweed
- 200 acres (600 stands) of invasive Phragmites treated
- 24 invasive green crab monitoring locations; 3 times/year
- 22 marsh edge erosion sites evaluated
- 1,000,000's of invasive green crabs removed from thousands of acres of estuary
- 1,000 barriers to flow assessed and preliminary design for the top 103 sites
- 100's of resiliency strategies developed for the 6 Great Marsh communities
- 100's of volunteers engaged and invested in their Great Marsh
- 1,000,000's of data nodes populated for modeling sediment and salinity transport in Plum Island Sound for invasive species control planning



The **Partnership** continues to implement resiliency projects post-Sandy and continues to work together to develop new efforts to improve the resiliency of the Great Marsh to sea level rise and climate change



Please answer these questions on your notecard and leave them with us at the end of the meeting

1. Are the 2017 priority areas still relevant? What is missing for 2018?
2. Are there individuals, entities or groups that we should look to involve in the Partnership?
3. What are the needs out there? (What can partnership do for you? For region?)