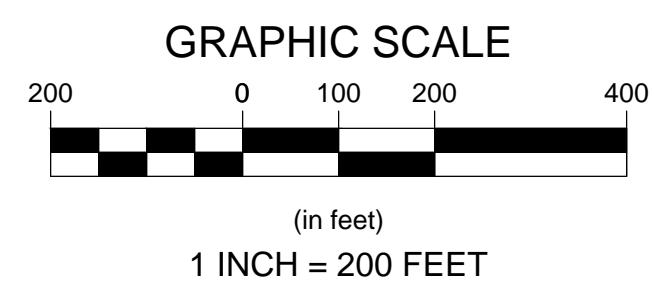


last modified: 01/13/17 11:50:17 AM printed: 01/13/17 11:50:17 AM H:\Projects\2016\16127\Ipswich\_River\_Coastal\_Resiliency\Drawings\16127 - BASE MAP.dwg



Revisions	Rev.	Date	By	Appr.	Description

**Horsley Witten Group, Inc.**  
 Sustainable Environmental Solutions  
 www.horsleywitten.com  
 90 Route 6A  
 Sandwich, MA 02563  
 Phone: (508) 833-6600 voice  
 508-833-3150 fax

**COASTAL RESILIENCY  
 GREEN INFRASTRUCTURE  
 IPSWICH, MASSACHUSETTS**

**BASE MAP**

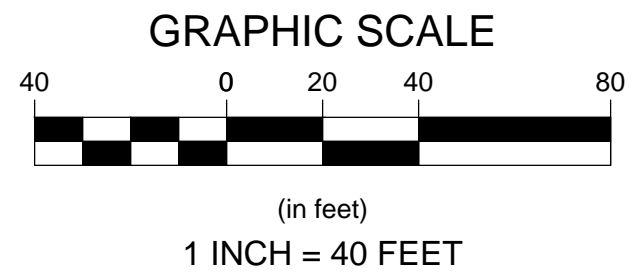
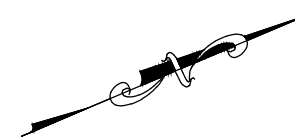
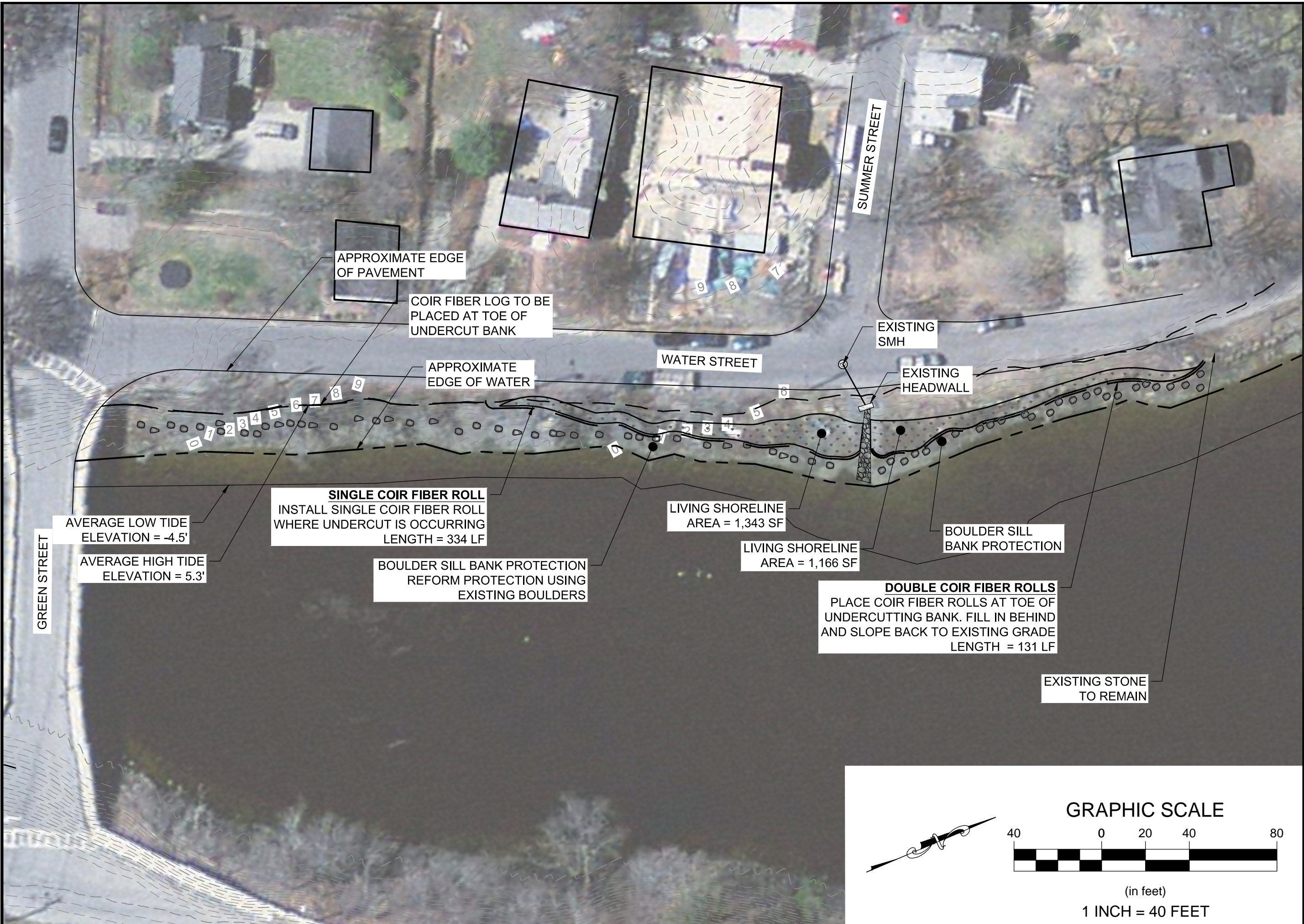
Prepared For:  
 Town of Ipswich  
 100 Main Street  
 Ipswich, MA 01938  
 Phone: (508) 935-1000  
 Fax: (508) 935-1000

Prepared By:  
 Horsley Witten Group, Inc.  
 90 Route 6A  
 Sandwich, MA 02563  
 Phone: (508) 833-6600  
 Fax: (508) 833-3150


Project Number:  
 16127

Sheet Number:  
 1 of 5

last modified: U:\1\30\17\_ printed: U:\1\30\17\_ dy gg H:\Projects\2016\1611\17\ Ipswich\_kriver & Coastal Resiliency\Drawings\1611\17 - BASB MAP.dwg



Revisions			
Rev.	Date	By	Description

  
**Horsley Witten Group, Inc.**  
 Sustainable Environmental Solutions  
 www.horsleywitten.com  
 90 Route 6A  
 Sandwich, MA 02563  
 508-833-6600 voice  
 508-833-3150 fax  
 Date: JANUARY 2017  
 Design By: GSG  
 Drawn By: GSG  
 Checked By: RAC

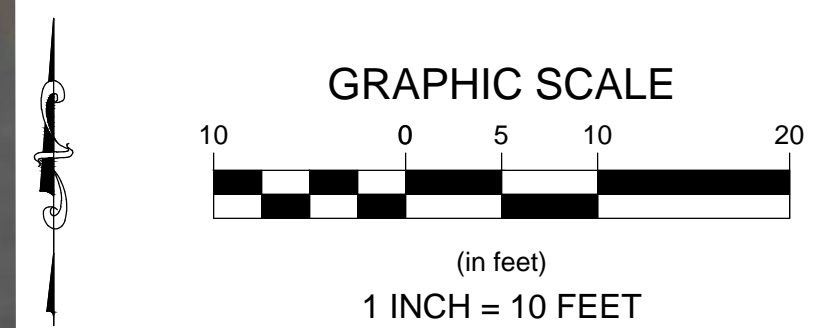
**COASTAL RESILIENCY  
 GREEN INFRASTRUCTURE  
 IPSWICH, MASSACHUSETTS**  
 Area 1 - Living Shoreline

Prepared For:  
 Town of Ipswich  
 Street  
 Town Name, MA  
 Phone: (508) .....  
 Fax: .....

Survey & Preparation Layout Provided By:  
**Horsley Witten Group, Inc.**  
 90 Route 6A  
 Sandwich, MA 02563  
 Phone: (508) 833-6600  
 Fax: (508) 833-3150

Registration:  
 Project Number:  
 16127  
 Sheet Number:  
 2 of 5

I:\ast modified: U:\SU\17 - printed: U:\SU\17 - dwg H:\PROJECTS\2016\1612\IPSWICH\_TOWN\_HALL\_COASTAL\_RESILIENCY\Drawings\1612\17 - BASC - MAP.dwg



Revisions			
Rev	Date	By	Description

**Horsley Witten Group, Inc.**  
 Sustainable Environmental Solutions  
 www.horsleywitten.com  
 90 Route 6A  
 Sandwich, MA 02563  
 Phone: 508-833-6600 voice  
 508-833-3150 fax

Date: JANUARY 2017  
 Design By: GSG  
 Drawn By: GSG  
 Checked By: RAC

Project Name:  
**COASTAL RESILIENCY GREEN INFRASTRUCTURE IPSWICH, MASSACHUSETTS**

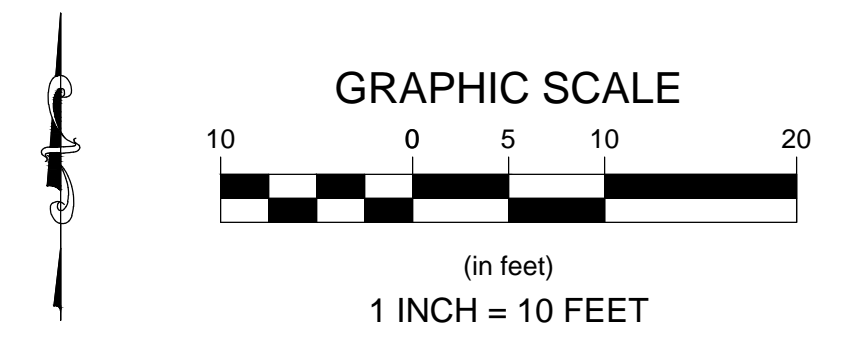
Plan Title:  
**AREA 2 - TIMBER STEPS**

Prepared For:  
 Town of Ipswich  
 Street:  
 Town Name, MA  
 Phone: (508) - - - -  
 Fax: - - - -

Prepared By:  
 Horsley Witten Group, Inc.  
 90 Route 6A  
 Sandwich, MA 02563  
 Phone: (508) 833-6600  
 Fax: (508) 833-3150

Registration:  
 Project Number:  
 16127  
 Sheet Number:  
 3 of 5

last modified: 01/13/17 / printed: 01/13/17 / dy gg H:\Projects\16161616\16161616\Ipswich\_kiver & Coastal Resiliency\Drawings\16161616 - BASC MAP.dwg



Revisions

Rev	Date	By	Appr	Description

**Horsley Witten Group, Inc.**  
Sustainable Environmental Solutions  
www.horsleywitten.com  
90 Route 6A  
Sandwich, MA 02563  
508-833-6600 voice  
508-833-3150 fax

Date: JANUARY 2017  
Design By: GSG  
Drawn By: GSG  
Checked By: RAC

Plan Set: **COASTAL RESILIENCY GREEN INFRASTRUCTURE IPSWICH, MASSACHUSETTS**

Plan Title: **AREA 3 - BOULDER STEPS**

Prepared For:  
**Town of Ipswich**  
..... Street  
Town Name, MA  
Phone: (508) .....  
Fax: .....

Prepared/Drawn/Checked By:  
**Horsley Witten Group, Inc.**  
90 Route 6A  
Sandwich, MA 02563  
Phone: (508) 833-6600  
Fax: (508) 833-3150

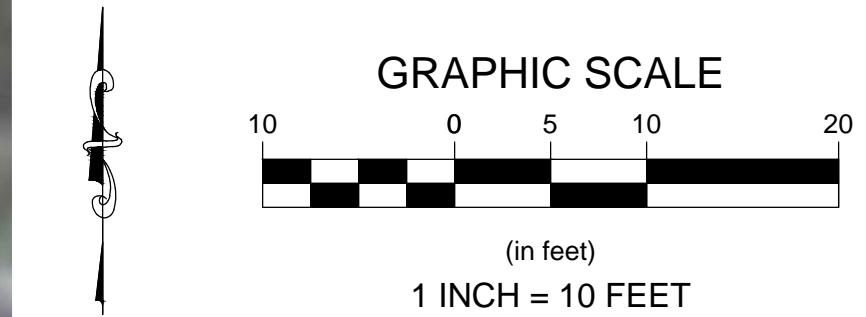
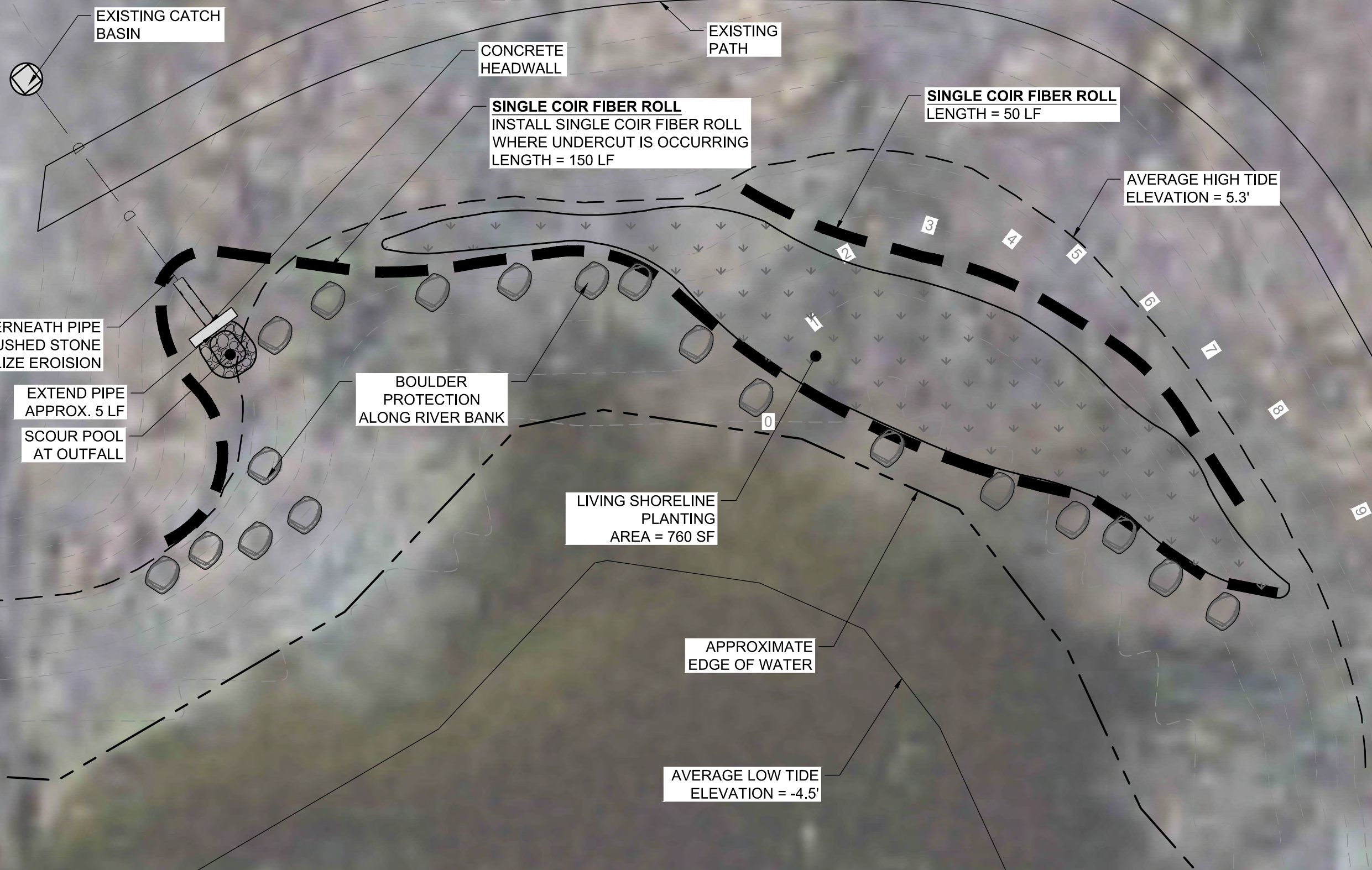
Registration:

Project Number: **16127**

Sheet Number: **4 of 5**

last modified: 01/13/2017 11:50:17 AM printed: 01/13/2017 11:50:17 AM H:\Projects\2017\1612\Ipswich\_River & Coastal Resiliency\Drawings\1612\1612 - BASC - MAP.dwg

COUNTY STREET



<p><b>Revisions</b></p> <table border="1"> <thead> <tr> <th>Rev.</th> <th>Date</th> <th>By</th> <th>Appr.</th> <th>Description</th> </tr> </thead> <tbody> <tr> <td> </td> <td> </td> <td> </td> <td> </td> <td> </td> </tr> </tbody> </table>		Rev.	Date	By	Appr.	Description					
Rev.	Date	By	Appr.	Description							
<p><b>Horsley Witten Group, Inc.</b>          Sustainable Environmental Solutions          www.horsleywitten.com          90 Route 6A          Sandwich, MA 02563          Phone: (508) 833-6600 voice          Fax: (508) 833-3150</p>											
<p>Checked By: RAC</p>	<p>Drawn By: GSG</p>										
<p>Design By: GSG</p>	<p>Date: JANUARY 2017</p>										
<p><b>COASTAL RESILIENCY GREEN INFRASTRUCTURE IPSWICH, MASSACHUSETTS</b></p>											
<p><b>AREA 4 - STORMWATER OUTFALL</b></p>											
<p>Prepared For:          Town of Ipswich          111 Street          Town Name, MA          Phone: (508) 111-1111          Fax: 111-1111</p>	<p>Plan Set:</p>										
<p>Prepared By:          Horsley Witten Group, Inc.          90 Route 6A          Sandwich, MA 02563          Phone: (508) 833-6600          Fax: (508) 833-3150</p>	<p>Plan Title:</p>										
<p>Registration:</p>											
<p>Project Number:          16127</p>											
<p>Sheet Number:          5 of 5</p>											

last modified: U:\1\30\1\7 - printed: U:\1\30\1\7 - H:\PROJECTS\2016\1612\Ipswich\_River & Coastal Resiliency\Drawings\1612\7 - BASC MAP.dwg

**SOUTH MAIN STREET**

DESIGNED AS EXPOSED PIPE

RECENTLY EXPOSED

NO ACTION WHERE APPROACHING THE BRIDGE

APPROXIMATE HIGH TIDE LINE

EXPOSED EXISTING SEWER LINE

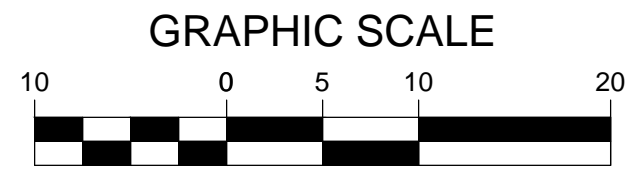
EXPOSED EXISTING SEWER LINE

GRANULAR FILL TO MATCH EXISTING LOAM AND SEED AFTER GRADING IS COMPLETED  
VOLUME = 10 CY

2' BOULDERS EMBEDDED IN GRAVEL WITH FILTER FABRIC

APPROXIMATE LOCATION OF PIPE ENTERING EXISTING GROUND COVER

AVERAGE LOWTIDE LINE ELEVATION = -4.5'



GRAPHIC SCALE

(in feet)

1 INCH = 10 FEET

Revisions	Rev.	Date	By	Appr.	Description

**Horsley Witten Group, Inc.**  
Sustainable Environmental Solutions  
www.horsleywitten.com  
90 Route 6A  
Sandwich, MA 02563  
508-833-6600 voice  
508-833-3150 fax

Date: JANUARY 2017  
Design By: GSG  
Drawn By: GSG  
Checked By: RAC

COASTAL RESILIENCY  
GREEN INFRASTRUCTURE  
IPSWICH, MASSACHUSETTS

Area 5 - EXPOSED SEWER PIPE

Requested For:  
Town of Ipswich  
111 Street  
Town Name, MA  
Phone: (508) 111-1111  
Fax: 111-1111

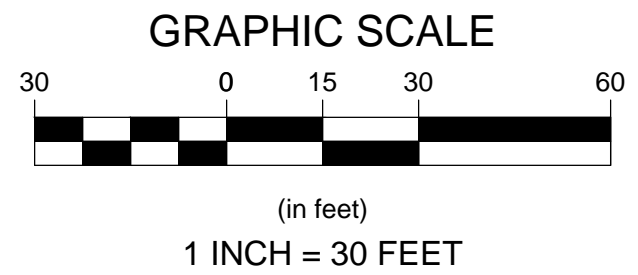
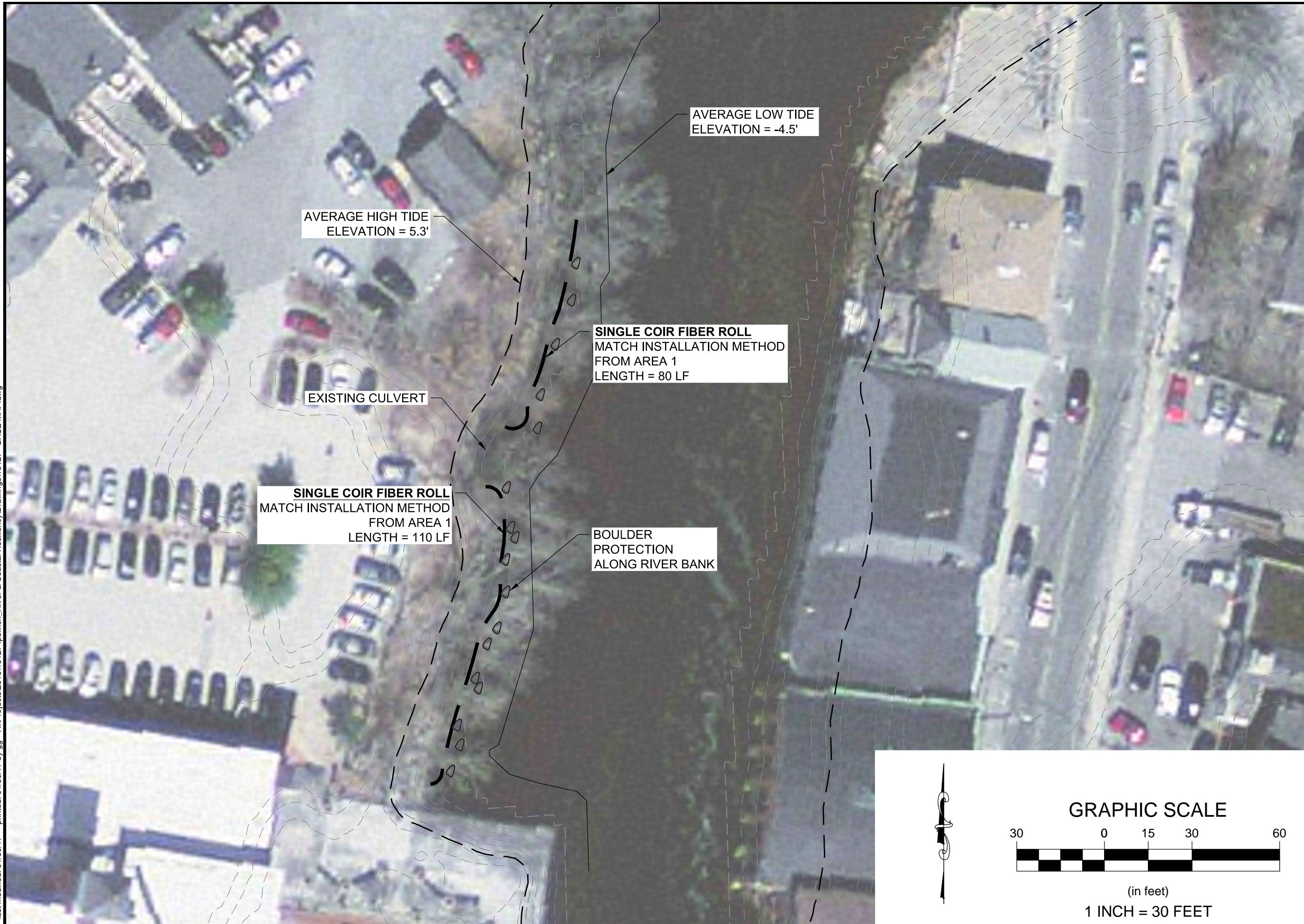
Prepared/Checked/Designed By:  
Horsley Witten Group, Inc.  
90 Route 6A  
Sandwich, MA 02563  
Phone: (508) 833-6600  
Fax: (508) 833-3150

Registration:

Project Number:  
16127

Sheet Number:  
6 of 5

last modified: 01/13/2017 11:01:17 AM printed: 01/13/2017 11:01:17 AM H:\PROJECTS\2016\16127\IPSWICH\_RIVER & COASTAL RESILIENCY\Drawings\16127 - BASC MAP.dwg



Revisions			
Rev.	Date	By	Description

**Horsley Witten Group, Inc.**  
Sustainable Environmental Solutions  
www.horsleywitten.com  
90 Route 6A  
Sandwich, MA 02563  
508-833-6600 voice  
508-833-3150 fax

Date: JANUARY 2017  
Design By: GSG  
Drawn By: GSG  
Checked By: RAC

Prepared For:  
**Town of Ipswich**  
Town Name, MA  
Phone: (508) 455-4444  
Fax: 455-4444

Project Title:  
**COASTAL RESILIENCY  
GREEN INFRASTRUCTURE  
IPSWICH, MASSACHUSETTS  
AREA 6 - RIVER UNDERCUT**

Prepared For:  
**Town of Ipswich**  
Town Name, MA  
Phone: (508) 455-4444  
Fax: 455-4444

Prepared For:  
**Horsley Witten Group, Inc.**  
90 Route 6A  
Sandwich, MA 02563  
Phone: (508) 833-6600  
Fax: (508) 833-3150

Registration:

Project Number:  
16127

Sheet Number:  
7 of 5