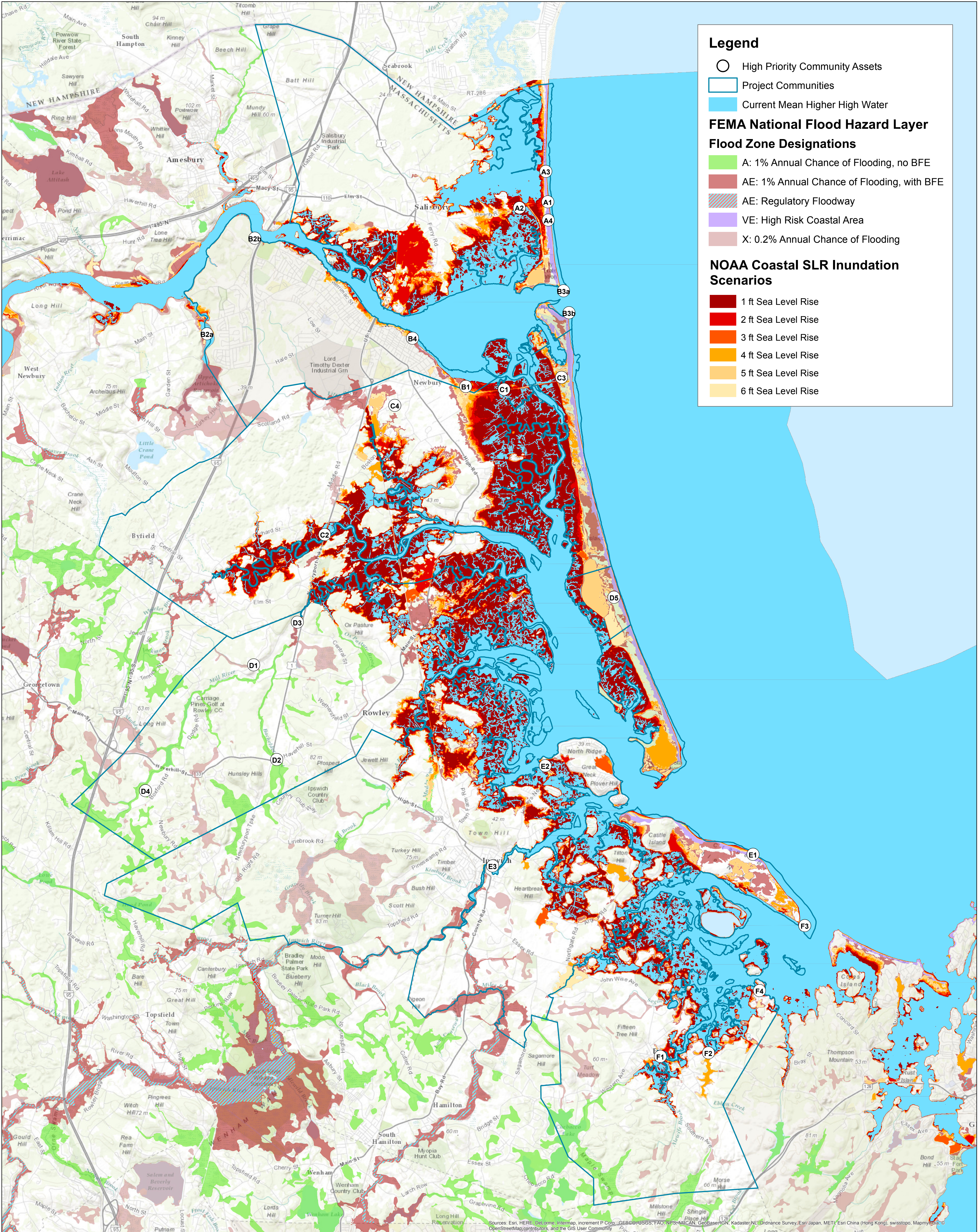


# FEMA Flood Zones & Projected Sea Level Rise

## Great Marsh Region



High priority assets vulnerable to flooding and projected sea level rise (in feet). Assets identified by Community Resiliency Planning Task Forces in Salisbury, Newburyport, Newbury, Rowley, Ipswich, and Essex, MA.

#### SALISBURY ASSETS

- A1 Salisbury Beach @ Broadway
- A2 Route 1A (Beach Road)
- A3 Salisbury Barrier Beach
- A4 Coastal Dune south of Broadway

#### NEWBURYPORT ASSETS

- B1 Plum Island Turnpike
- B2a Lower Artichoke Reservoir
- B2b Bartlette Spring Pond
- B3a Merrimack River Jetty System
- B3b Merrimack River Jetty System
- B4 Waste Water Treatment Facility

#### NEWBURY ASSETS

- C1 Plum Island Turnpike/Plumbush Downs
- C2 Newburyport Turnpike/Route 1
- C3 Sewage Pumping Station
- C4 Newbury Elementary School

#### ROWLEY ASSETS

- D1 Hillside Street Culvert
- D2 Route 133 @ Bachelder Brook
- D3 Jewel Mill Dam
- D4 Rowley Town Well #3
- D5 Plum Island Beach

#### IPSWICH ASSETS

- E1 Crane Beach
- E2 Jeffrey's Neck Road
- E3 Downtown Ipswich

#### ESSEX ASSETS

- F1 Main Street Causeway & Woodman's Beach
- F2 Eastern Avenue @ Ebben Creek
- F3 Crane Beach (tip of point)
- F4 Conomo Point Road